

GB/4 (1b)
SP/9

**South Cambridgeshire
Adopted Proposals Map
Published January 2010**

Inset No. 35 Fulbourn
Map 2 of 5
Scale 1:5000

Reproduced from the Ordnance Survey Mapping with the permission of the Controller of Her Majesty's Stationery Office © Crown Copyright. Unauthorised reproduction infringes Crown Copyright and may lead to prosecution or civil proceedings.

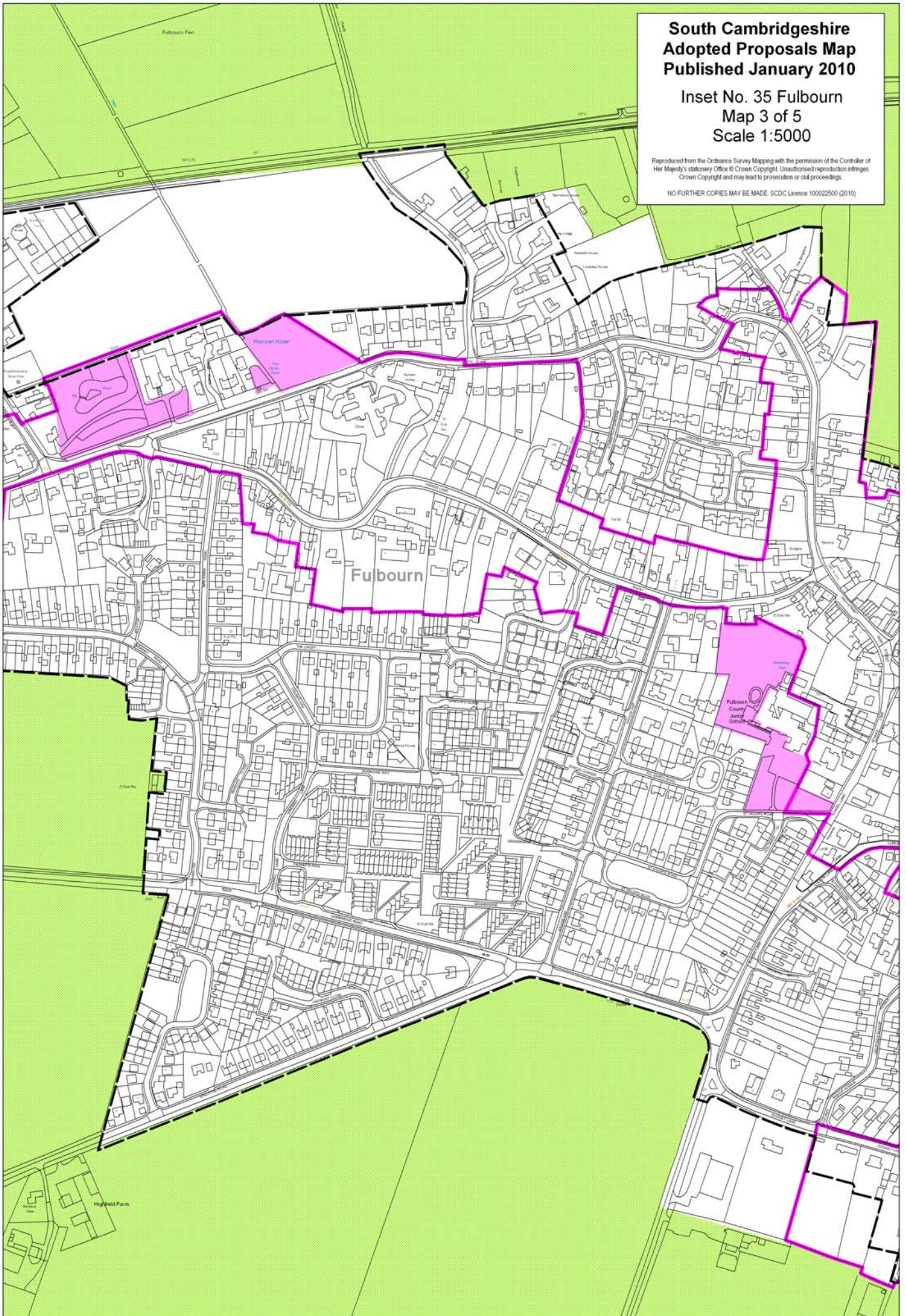
NO FURTHER COPIES MAY BE MADE. SDCDC Licence 100022500 (2010)

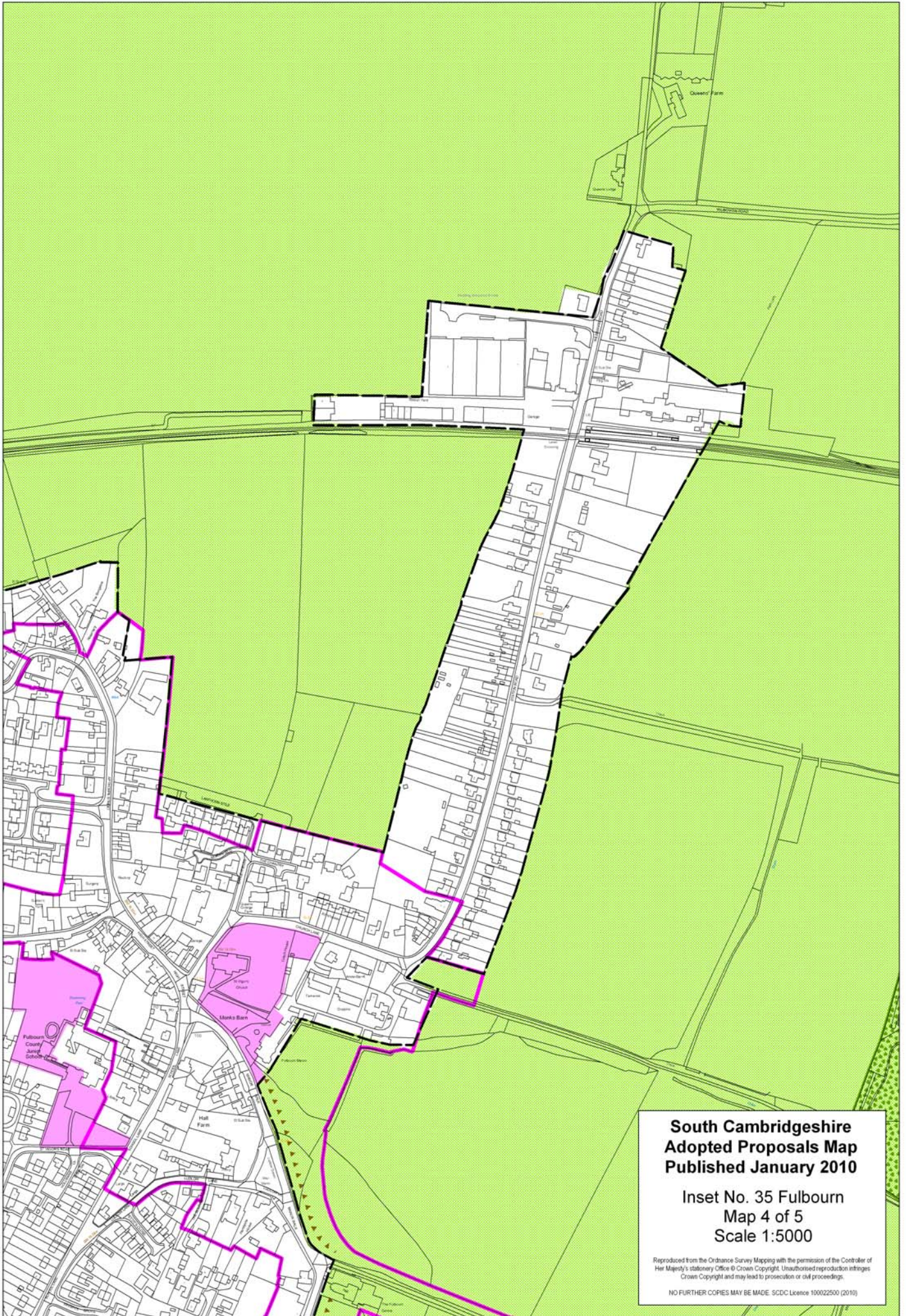
**South Cambridgeshire
Adopted Proposals Map
Published January 2010**

**Inset No. 35 Fulbourn
Map 3 of 5
Scale 1:5000**

Reproduced from the Ordnance Survey Mapping with the permission of the Controller of Her Majesty's Stationery Office © Crown Copyright. Unauthorised reproduction infringes Crown Copyright and may lead to prosecution or civil proceedings.

NO FURTHER COPIES MAY BE MADE. SCDL Licence 100022500 (2010)

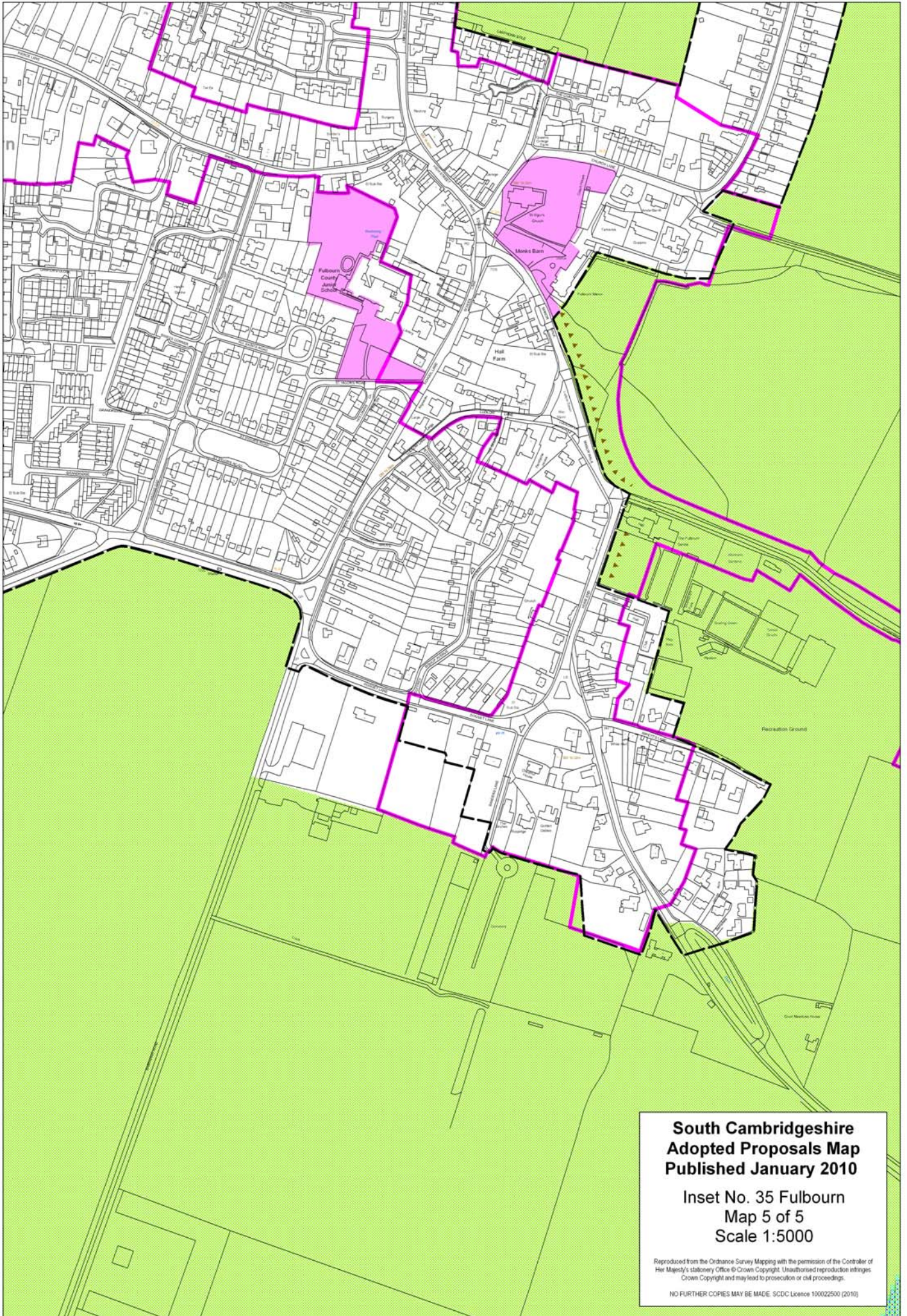


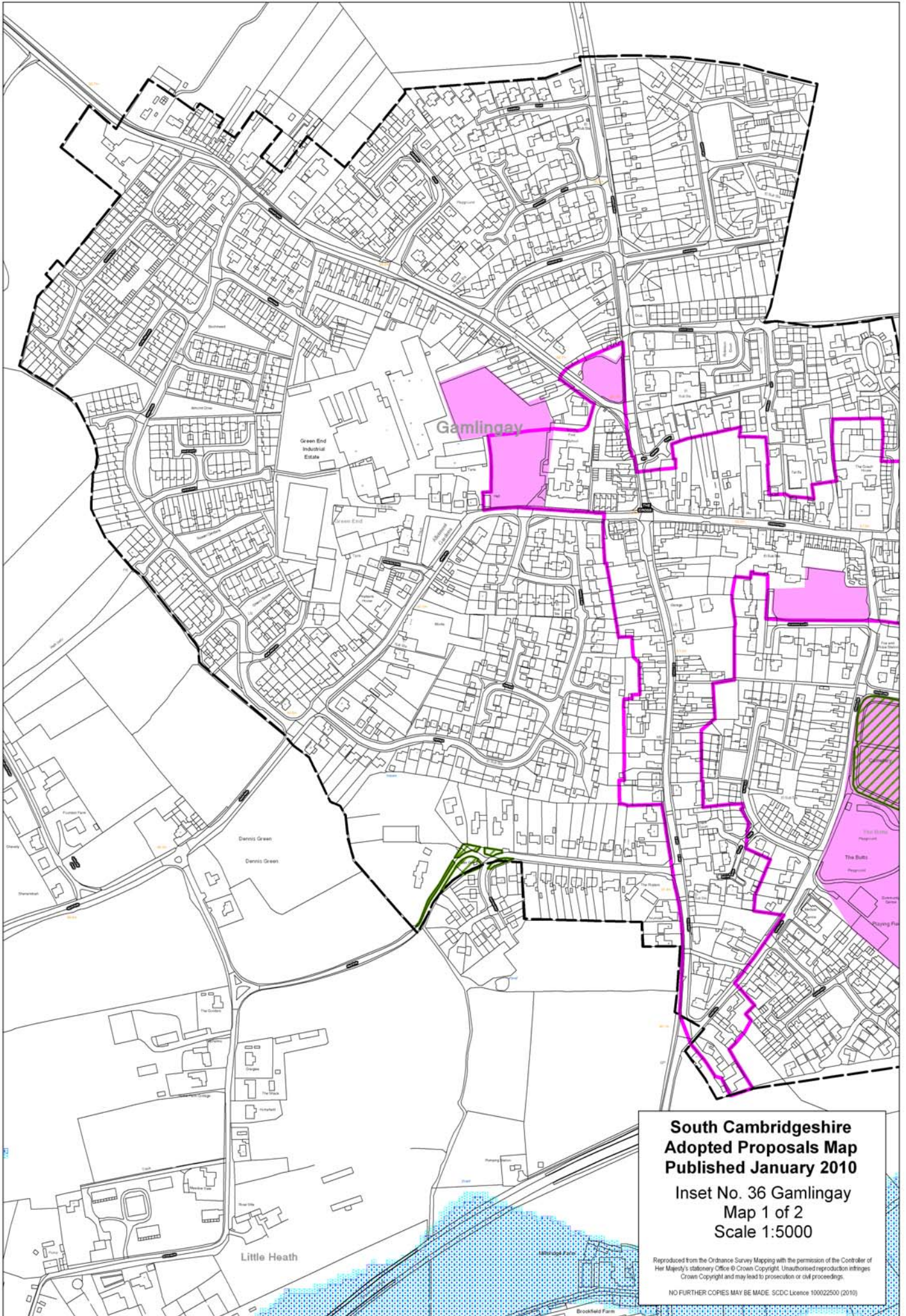


**South Cambridgeshire
Adopted Proposals Map
Published January 2010**

**Inset No. 35 Fulbourn
Map 4 of 5
Scale 1:5000**

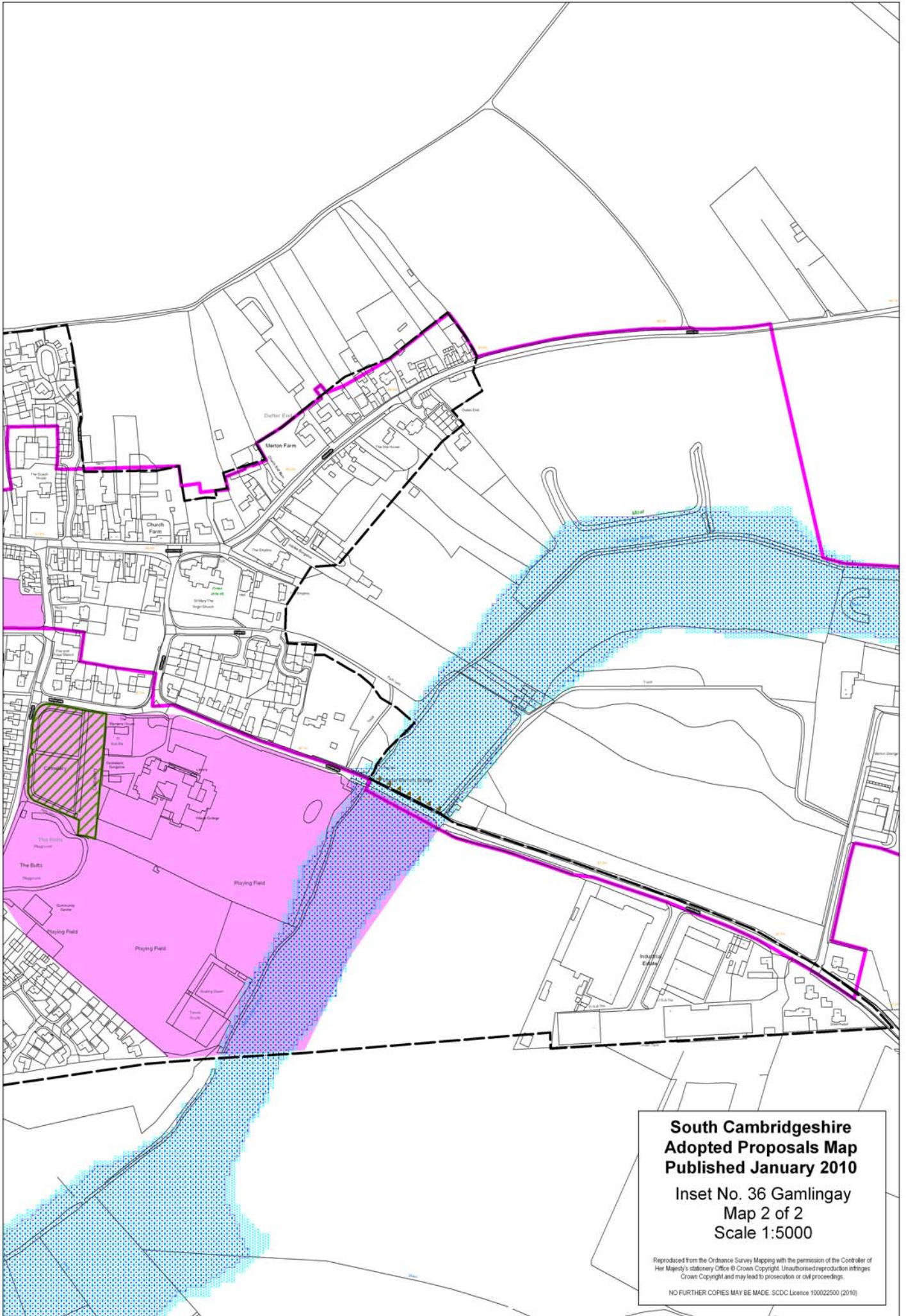
Reproduced from the Ordnance Survey Mapping with the permission of the Controller of Her Majesty's Stationery Office © Crown Copyright. Unauthorised reproduction infringes Crown Copyright and may lead to prosecution or civil proceedings.
NO FURTHER COPIES MAY BE MADE. SDCDC Licence 100022500 (2010)





**South Cambridgeshire
Adopted Proposals Map
Published January 2010**
Inset No. 36 Gamlingay
Map 1 of 2
Scale 1:5000

Reproduced from the Ordnance Survey Mapping with the permission of the Controller of Her Majesty's Stationery Office © Crown Copyright. Unauthorised reproduction infringes Crown Copyright and may lead to prosecution or civil proceedings.
NO FURTHER COPIES MAY BE MADE SCDL Licence 100022500 (2010)



**South Cambridgeshire
Adopted Proposals Map
Published January 2010**

**Inset No. 36 Gamlingay
Map 2 of 2
Scale 1:5000**

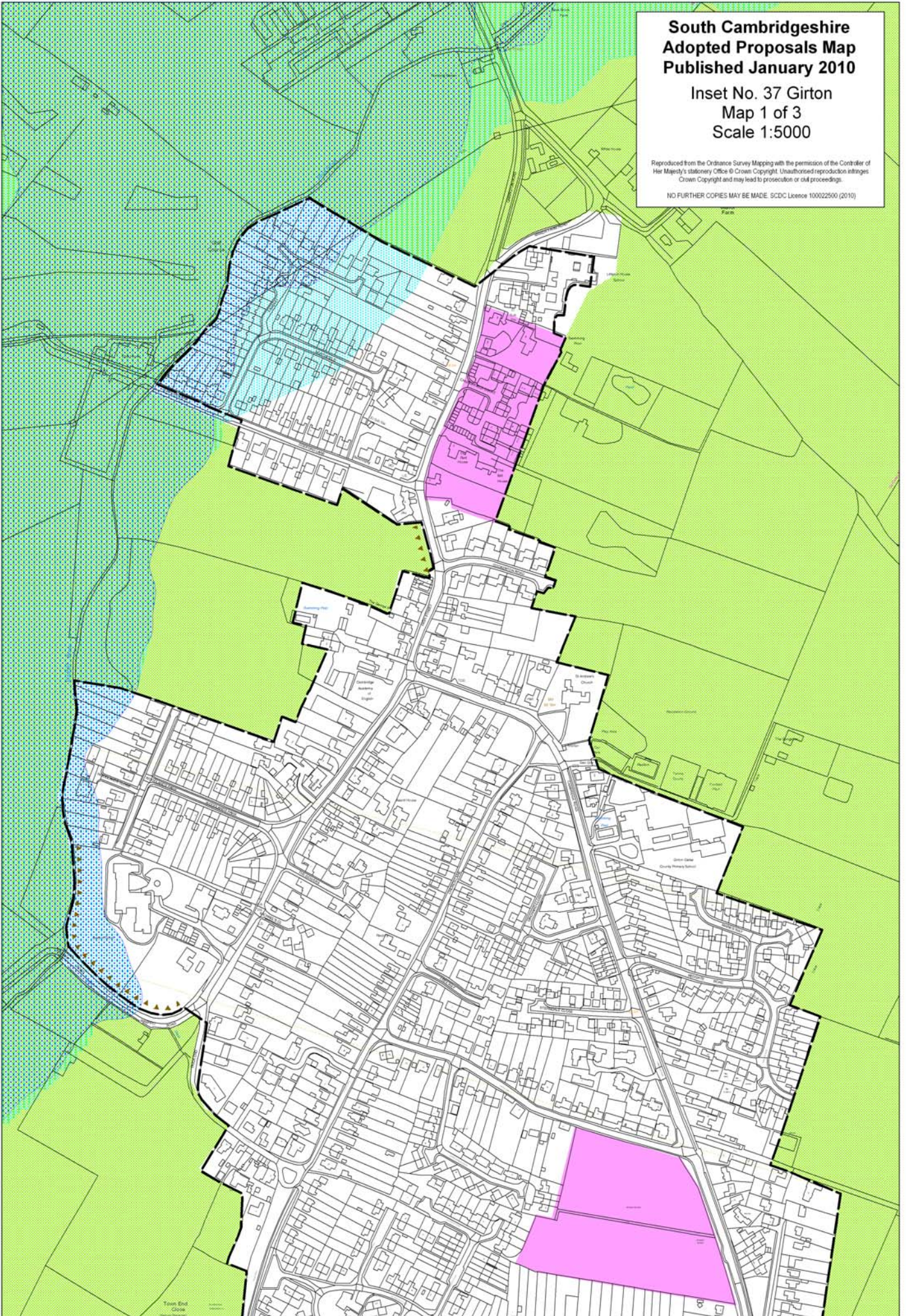
Reproduced from the Ordnance Survey Mapping with the permission of the Controller of Her Majesty's Stationery Office © Crown Copyright. Unauthorised reproduction infringes Crown Copyright and may lead to prosecution or civil proceedings.
NO FURTHER COPIES MAY BE MADE. SDCDC Licence 100022500 (2010)

**South Cambridgeshire
Adopted Proposals Map
Published January 2010**

**Inset No. 37 Girton
Map 1 of 3
Scale 1:5000**

Reproduced from the Ordnance Survey Mapping with the permission of the Controller of Her Majesty's Stationery Office © Crown Copyright. Unauthorised reproduction infringes Crown Copyright and may lead to prosecution or civil proceedings.

NO FURTHER COPIES MAY BE MADE. SDCDC Licence 100022500 (2010)

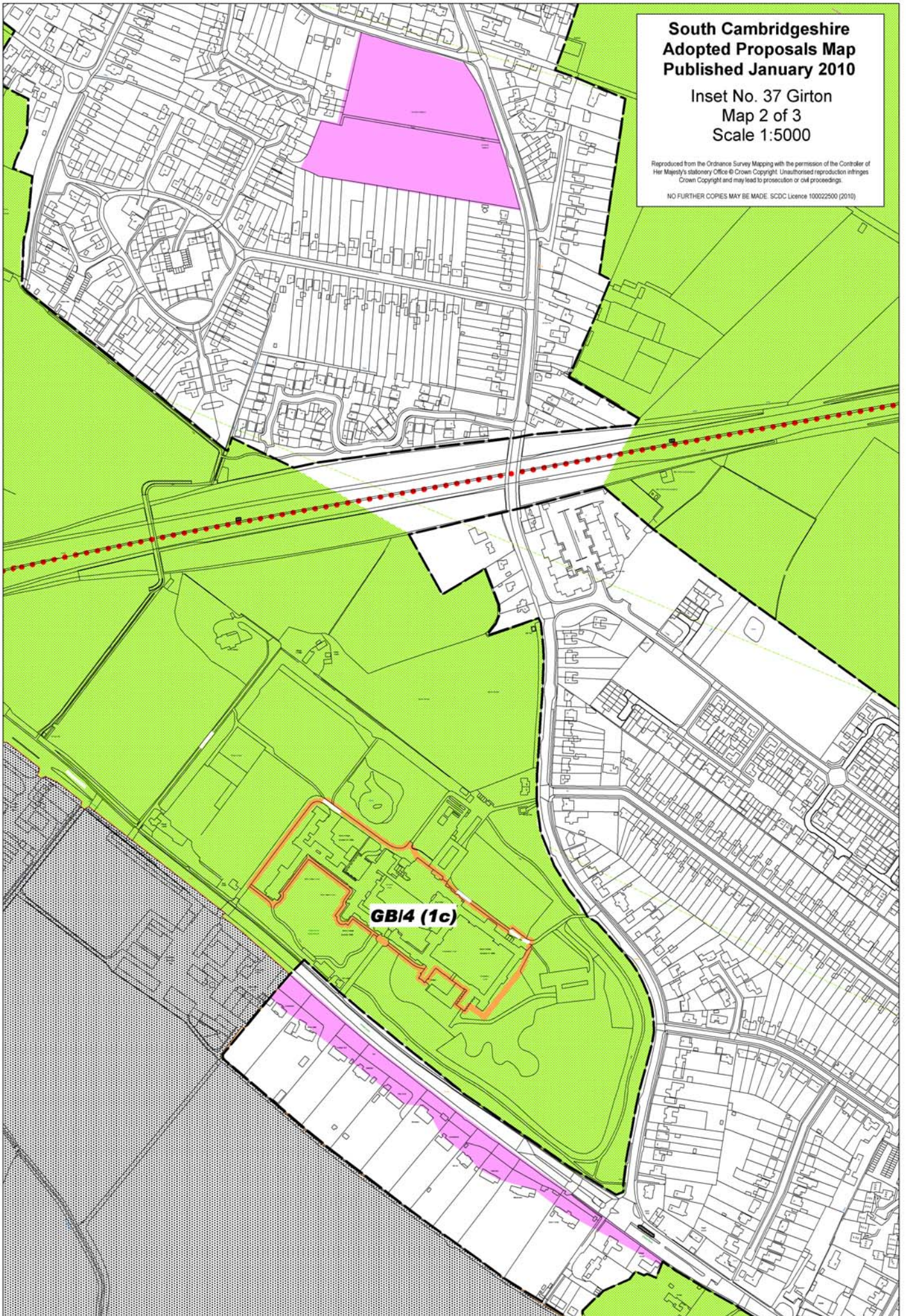


**South Cambridgeshire
Adopted Proposals Map
Published January 2010**

**Inset No. 37 Girton
Map 2 of 3
Scale 1:5000**

Reproduced from the Ordnance Survey Mapping with the permission of the Controller of Her Majesty's Stationery Office © Crown Copyright. Unauthorised reproduction infringes Crown Copyright and may lead to prosecution or civil proceedings.

NO FURTHER COPIES MAY BE MADE. SCDC Licence 100022500 (2010)



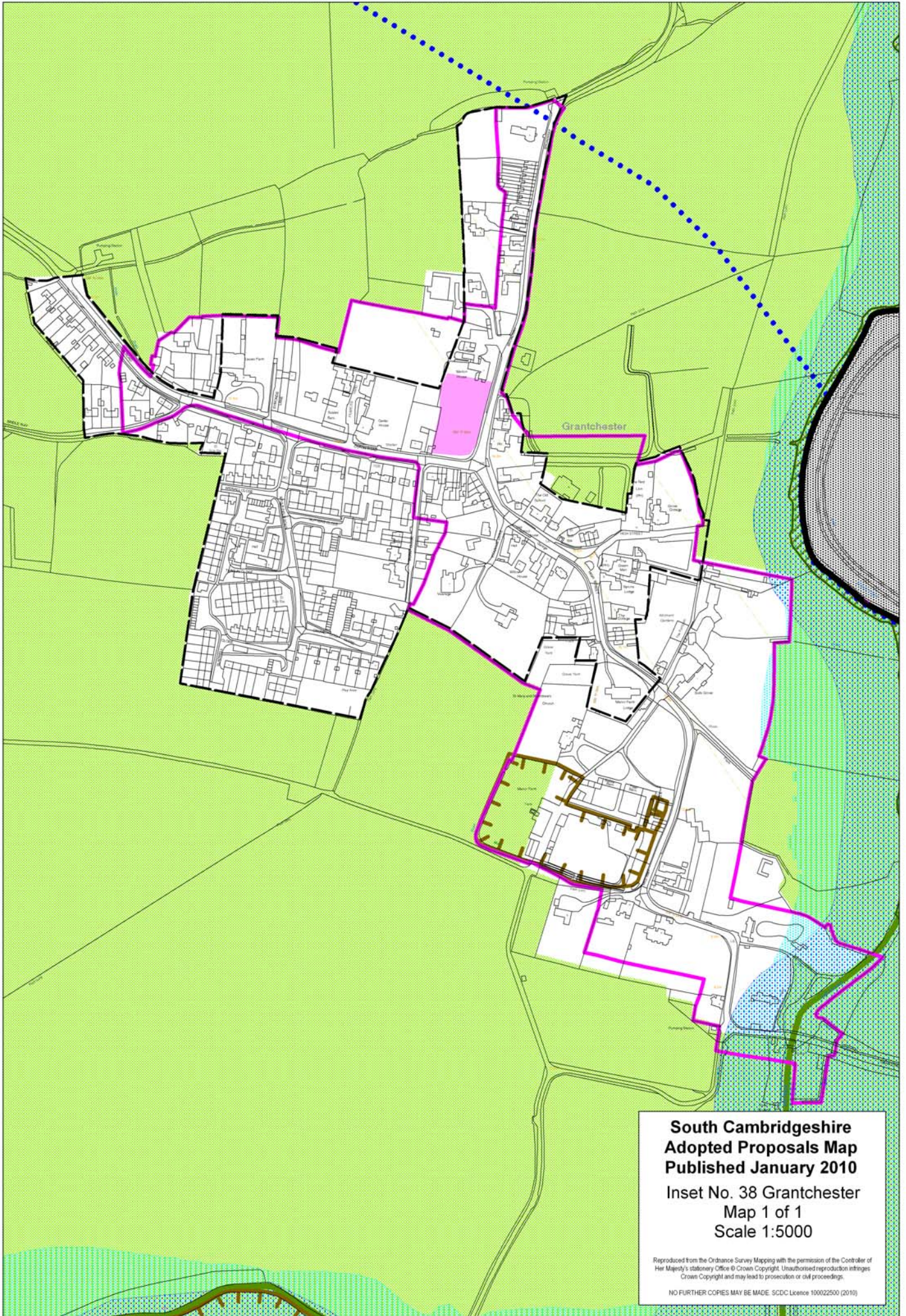


**South Cambridgeshire
Adopted Proposals Map
Published January 2010**

**Inset No. 37 Giron
Map 3 of 3
Scale 1:5000**

Reproduced from the Ordnance Survey Mapping with the permission of the Controller of Her Majesty's Stationery Office © Crown Copyright. Unauthorised reproduction infringes Crown Copyright and may lead to prosecution or civil proceedings.

NO FURTHER COPIES MAY BE MADE. SDC Licence 100022500 (2010)

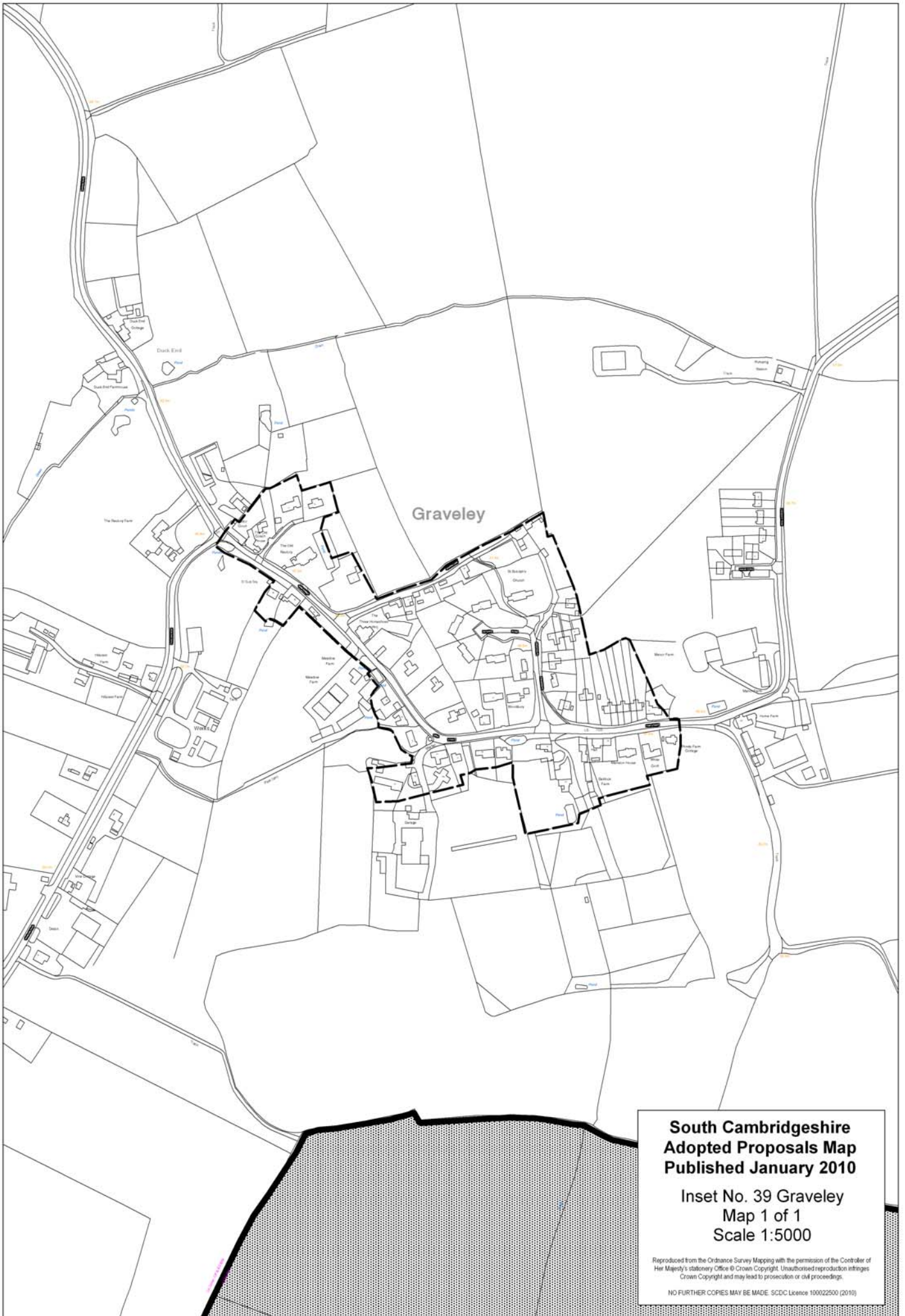


**South Cambridgeshire
Adopted Proposals Map
Published January 2010**

**Inset No. 38 Grantchester
Map 1 of 1
Scale 1:5000**

Reproduced from the Ordnance Survey Mapping with the permission of the Controller of Her Majesty's Stationery Office © Crown Copyright. Unauthorised reproduction infringes Crown Copyright and may lead to prosecution or civil proceedings.

NO FURTHER COPIES MAY BE MADE. SCDL Licence 100022500 (2010)



**South Cambridgeshire
Adopted Proposals Map
Published January 2010**

**Inset No. 39 Graveley
Map 1 of 1
Scale 1:5000**

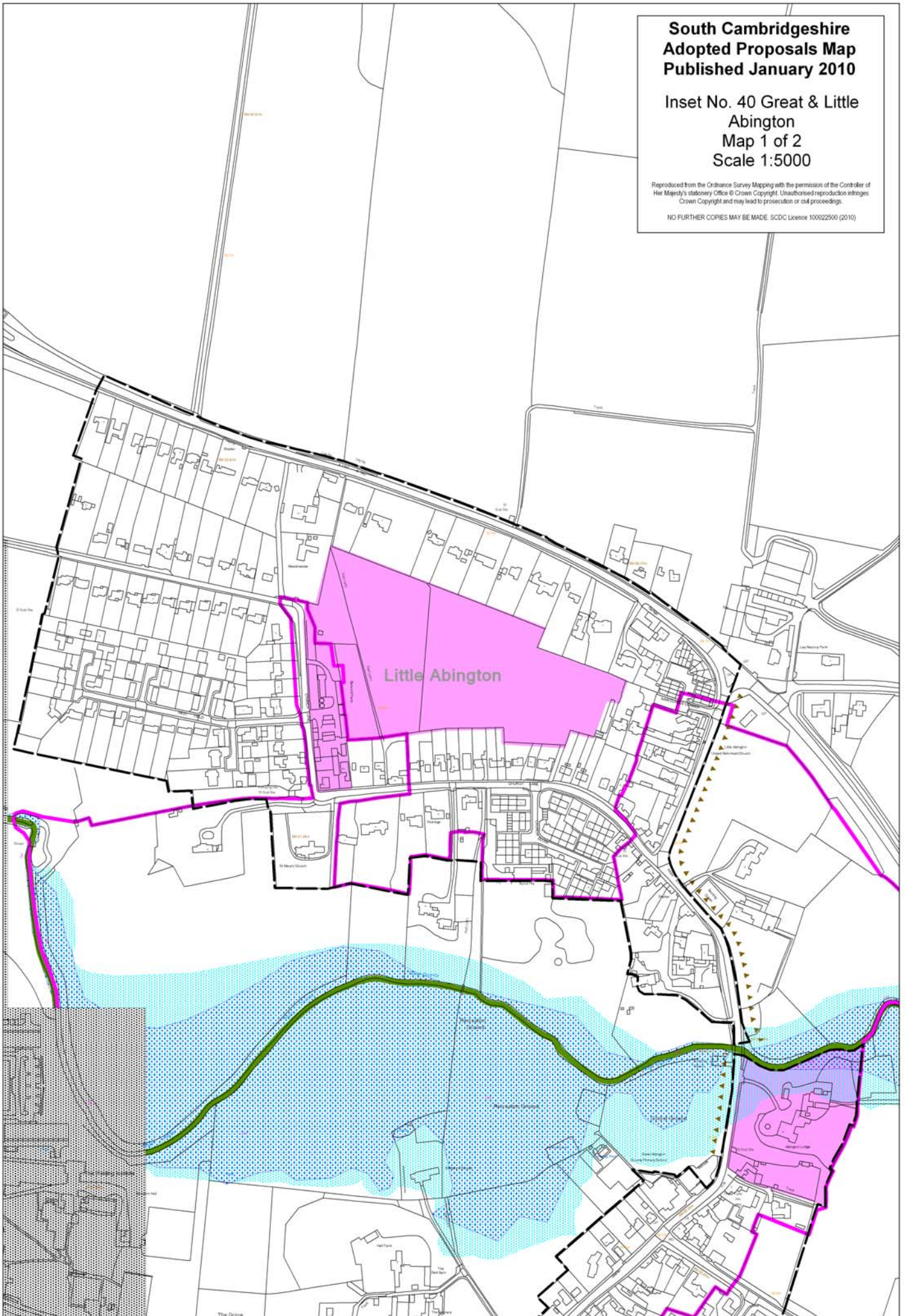
Reproduced from the Ordnance Survey Mapping with the permission of the Controller of Her Majesty's Stationery Office © Crown Copyright. Unauthorised reproduction infringes Crown Copyright and may lead to prosecution or civil proceedings.

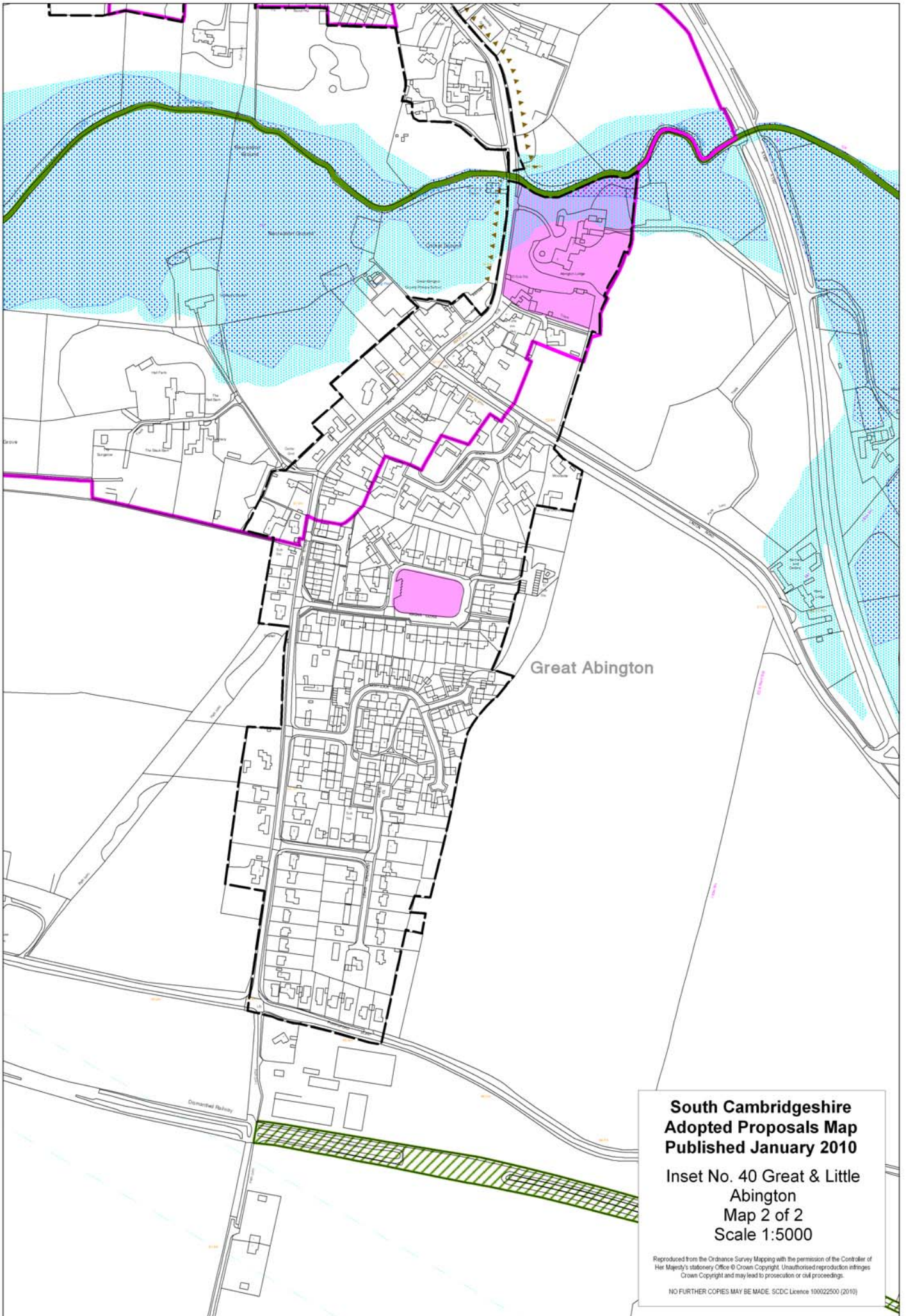
**South Cambridgeshire
Adopted Proposals Map
Published January 2010**

**Inset No. 40 Great & Little
Abington
Map 1 of 2
Scale 1:5000**

Reproduced from the Ordnance Survey Mapping with the permission of the Controller of Her Majesty's Stationery Office © Crown Copyright. Unauthorised reproduction infringes Crown Copyright and may lead to prosecution or civil proceedings.

NO FURTHER COPIES MAY BE MADE. SCDC Licence 100022500 (2010)





**South Cambridgeshire
Adopted Proposals Map
Published January 2010**

**Inset No. 40 Great & Little
Abington
Map 2 of 2
Scale 1:5000**

Reproduced from the Ordnance Survey Mapping with the permission of the Controller of Her Majesty's Stationery Office © Crown Copyright. Unauthorised reproduction infringes Crown Copyright and may lead to prosecution or civil proceedings.

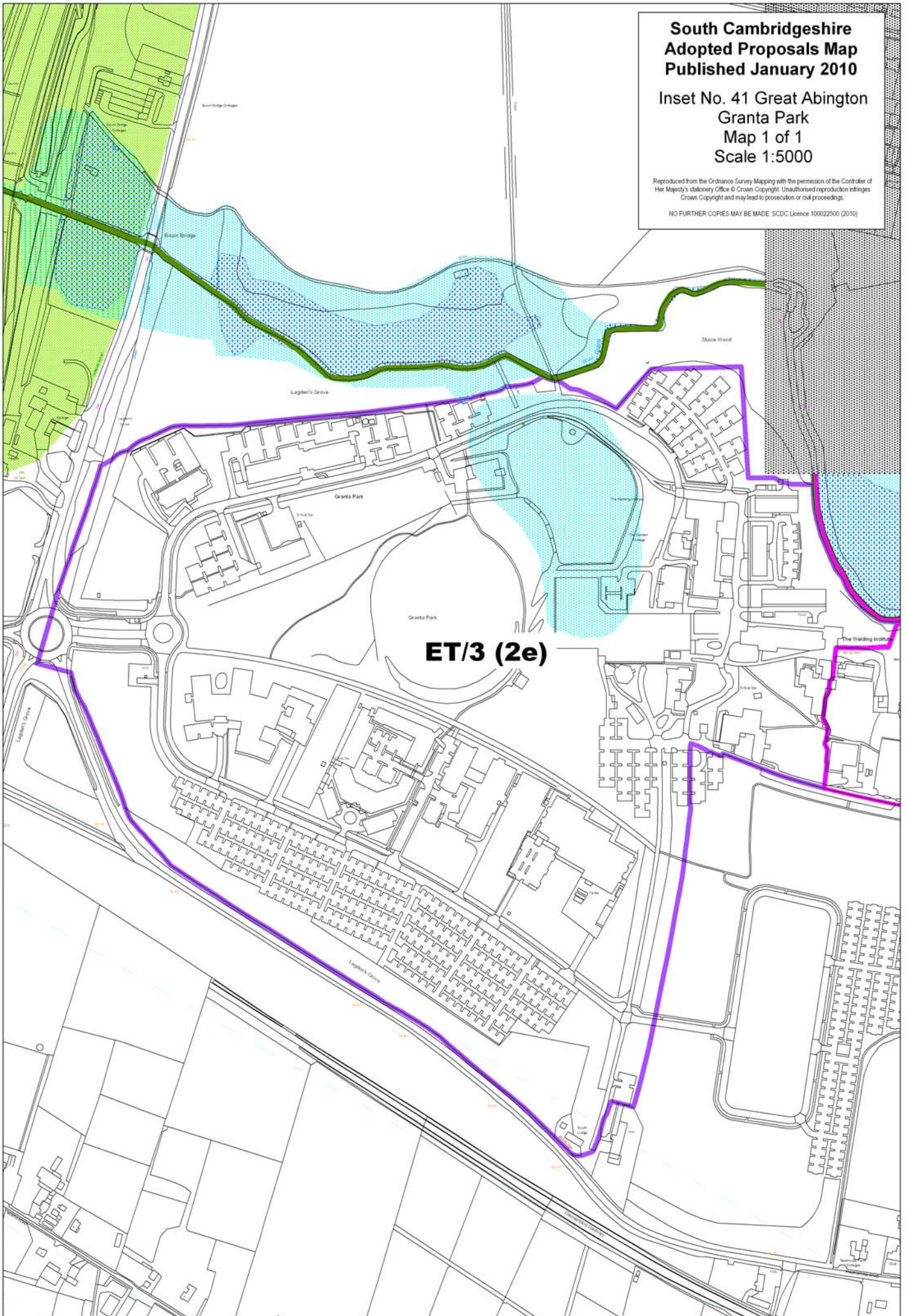
NO FURTHER COPIES MAY BE MADE. SDC Licence 100022500 (2010)

**South Cambridgeshire
Adopted Proposals Map
Published January 2010**

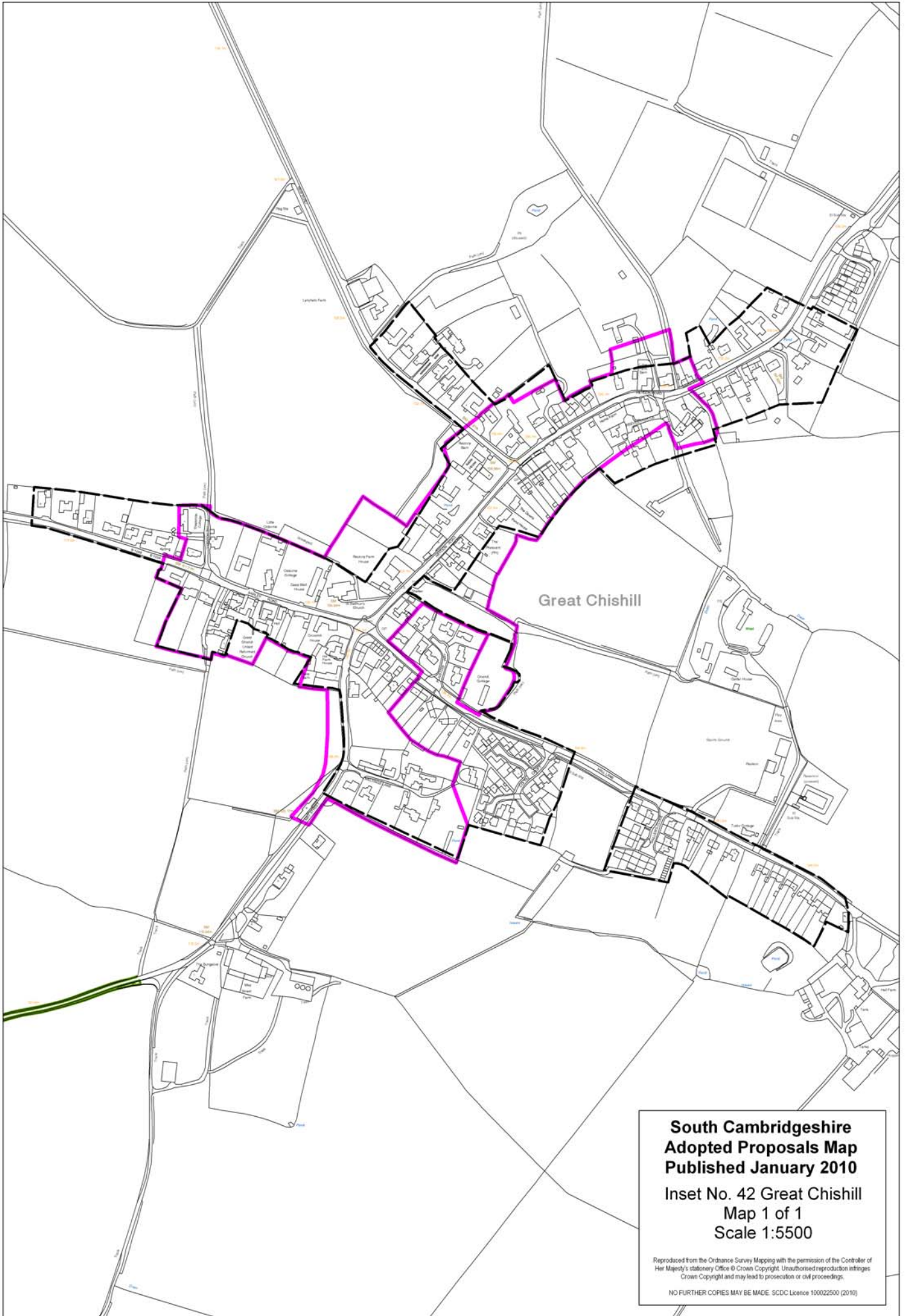
**Inset No. 41 Great Abington
Granta Park
Map 1 of 1
Scale 1:5000**

Reproduced from the Ordnance Survey Mapping with the permission of the Controller of Her Majesty's Stationery Office © Crown Copyright. Unauthorised reproduction infringes Crown Copyright and may lead to prosecution or civil proceedings.

NO FURTHER COPIES MAY BE MADE. SDCD Licence 100022500 (2010)



ET/3 (2e)



Great Chishill

**South Cambridgeshire
Adopted Proposals Map
Published January 2010**
Inset No. 42 Great Chishill
Map 1 of 1
Scale 1:5500

Reproduced from the Ordnance Survey Mapping with the permission of the Controller of Her Majesty's Stationery Office © Crown Copyright. Unauthorised reproduction infringes Crown Copyright and may lead to prosecution or civil proceedings.
NO FURTHER COPIES MAY BE MADE. SDCDC Licence 100022500 (2010)

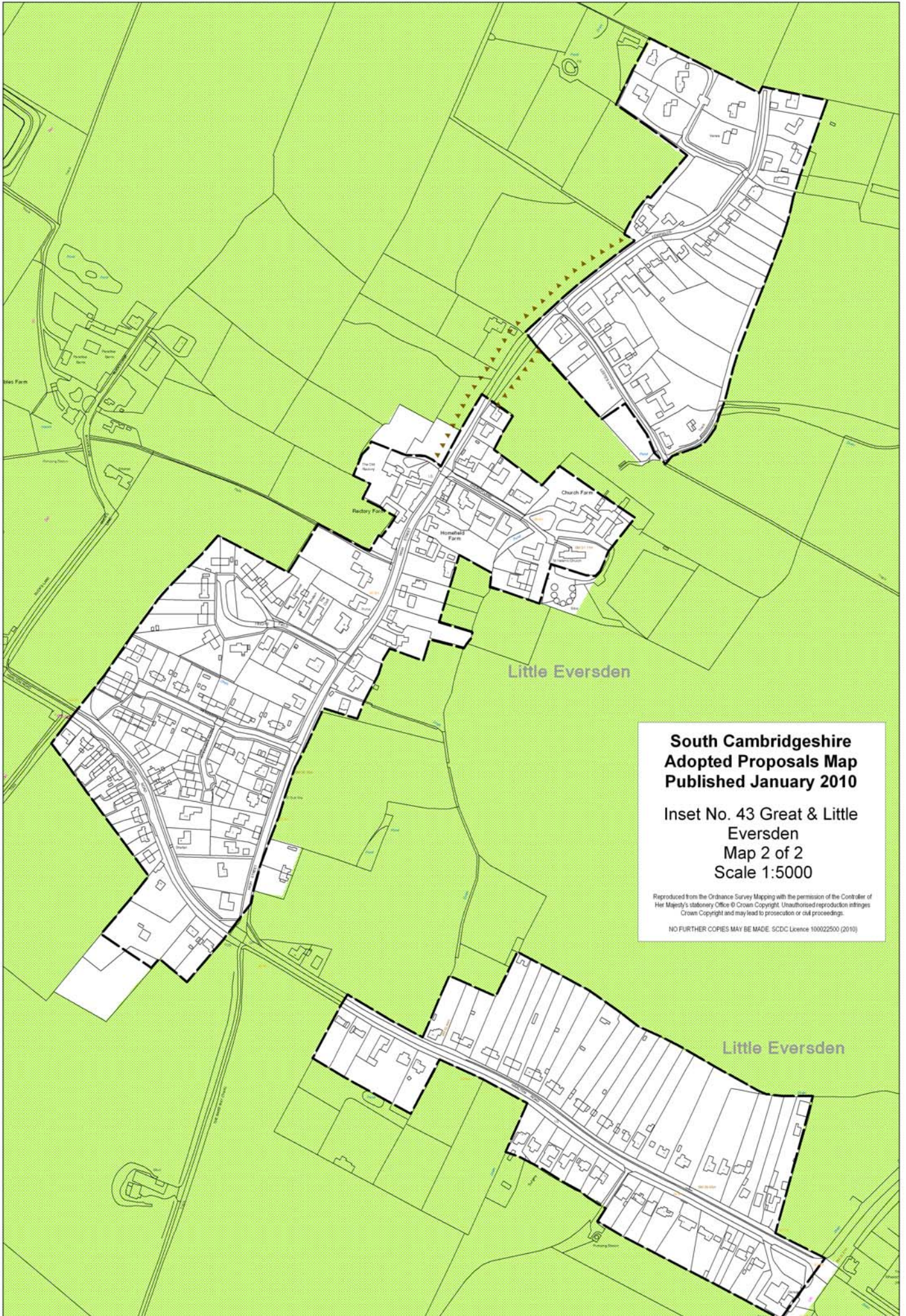


**South Cambridgeshire
Adopted Proposals Map
Published January 2010**

**Inset No. 43 Great & Little
Eversden
Map 1 of 2
Scale 1:5000**

Reproduced from the Ordnance Survey Mapping with the permission of the Controller of Her Majesty's Stationery Office © Crown Copyright. Unauthorised reproduction infringes Crown Copyright and may lead to prosecution or civil proceedings.

NO FURTHER COPIES MAY BE MADE. SDC Licence 100022500 (2010)



**South Cambridgeshire
Adopted Proposals Map
Published January 2010**

**Inset No. 43 Great & Little
Eversden
Map 2 of 2
Scale 1:5000**

Reproduced from the Ordnance Survey Mapping with the permission of the Controller of Her Majesty's Stationery Office © Crown Copyright. Unauthorised reproduction infringes Crown Copyright and may lead to prosecution or civil proceedings.

NO FURTHER COPIES MAY BE MADE. SDC Licence 100022500 (2010)